

EXTERIOR PANEL ELEVATION
SCALE: 1 : 1

INTERIOR PANEL ELEVATION
SCALE: 1 : 1

TYPICAL NEMA 4X JUNCTION BOX

| BILL OF MATERIAL | | | | |
|------------------|----------|---|-----------------|----------------|
| ITEM | QTY | DESCRIPTION | MANUFACTURER | CATALOG NUMBER |
| 1 | AS REQ'D | NEMA 4X ENCL. CONTINUOUS-HINGE WITH CLAMPS, 152X152X102MM | HOFFMAN | A606CHNFSS |
| 2 | AS REQ'D | PANEL FOR ITEM 1 | HOFFMAN | A6P6 |
| 3 | AS REQ'D | LAMACOIDS PER JUNCTION BOX SCHEDULE | - | |
| 4 | AS REQ'D | 35mm DIN RAIL | PHOENIX CONTACT | 0801733 |
| 5 | AS REQ'D | TERMINAL END CLAMP – CLIPFIX 35 | PHOENIX CONTACT | 3022218 |
| 6 | AS REQ'D | FEED-THROUGH TERMINAL – UT 4-MTD | PHOENIX CONTACT | 3046184 |
| 7 | AS REQ'D | TERMINAL END PLATE – D-UT 2,5/4 TWIN | PHOENIX CONTACT | 3047141 |
| 8 | AS REQ'D | GROUND BAR, 6 TAPS | ILSCO | 0167-6 |

| JUNCTION BOX SCHEDULE | | |
|-----------------------|---------------------|-------------------------------------|
| IDENTIFIER | NUMBER OF TERMINALS | DESCRIPTION |
| JB-C6301 | 7 | SUPPLY FAN SF-C630 DAMPER XV-C6301 |
| JBA-C6701 | 7 | SCRUBBER SCRB-C670 DAMPER XV-C6701 |
| JBA-C6401 | 7 | EXHAUST FAN EF-C640 DAMPER XV-C6401 |
| JBA-C6411 | 7 | EXHAUST FAN EF-C641 DAMPER XV-C6411 |
| JBA-C6421 | 7 | EXHAUST FAN EF-C642 DAMPER XV-C6421 |

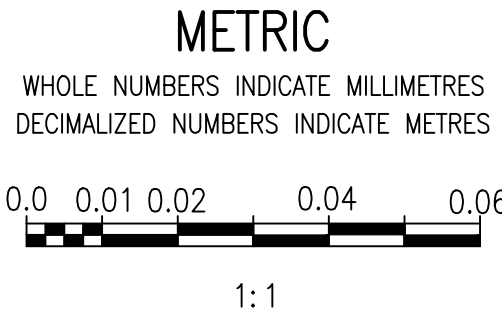
GENERAL NOTES:



- ALL POWER AND 120 VAC WIRING ARE TEW/MTW 300V, 105°C INSULATION, STRANDED COPPER, 12 AWG OR LARGER WHERE CURRENT REQUIREMENTS DICTATE AS PER CEC REQUIREMENTS.
- ALL 24 VDC CONTROL WIRING IS TEW/MTW 300V, 105°C INSULATION, STRANDED COPPER, 16 AWG.
- COMPONENTS ARE LABELED AS SHOWN ON THE DRAWINGS.
- TESTED ALL WIRING AND COMPONENTS FOR FUNCTIONAL OPERATION, CORRECT CONNECTION, CONTINUITY AND INSULATION INTEGRITY. DOCUMENTED ALL TEST RESULTS.
- ALL MAJOR COMPONENTS INSIDE THE PANEL ARE LABELED WITH LAMACOIDS IN ACCORDANCE WITH MAJOR DESCRIPTIONS ON THE DRAWINGS.
- PROVIDED WIRE BARREL FERRULES FOR ALL WIRING.
- ALL TERMINAL BLOCKS ARE NUMBERED AS SHOWN IN THE DRAWINGS, COMPLETE WITH GROUP LABELING.
- ALL WIRES ARE MARKED AS INDICATED ON THE DRAWINGS.

SPECIFIC NOTES:

- 1 PROVIDED JUNCTION BOX FOR ASSOCIATED DAMPER ACTUATOR. JUNCTION BOX WAS INSTALLED WITHIN ONE (1) METER OF DAMPER ACTUATOR.

| | |
|----------------|---|
| 1-0630M-E0083 | CONNECTION DIAGRAM, CHLORINE GAS SCRUBBER SCBR-C670 |
| 1-0630M-E0082 | EXHAUST FAN EF-C642, CHLORINATOR EQUIPMENT ROOM |
| 1-0630M-E0081 | SUPPLY FAN SF-C630, CHLORINATOR EQUIPMENT ROOM |
| 1-0630M-E0080 | EXHAUST FAN EF-C641, TONNER STORAGE ROOM |
| 1-0630M-E0079 | EXHAUST FAN EF-C640, TONNER STORAGE ROOM |
| 1-0630M-E0073 | ELECTRICAL EQUIPMENT PLAN, CHLORINE BUILDING |
| DRAWING NUMBER | REFERENCE DRAWINGS |



| | | | | | | | | | | | | | | | | |
|-----|------------------------------------|--|--|--|---|--------|-----------------|--|---|--------------------------------------|---|--|--|--------------|------------|------------|
| | | | | |  148 Nature Park Way, Winnipeg, Manitoba Canada R3P 0X7 204-786-8080 | | ENGINEER'S SEAL | |  THE CITY OF WINNIPEG WATER AND WASTE DEPARTMENT | | | | | | | |
| | | | | | DESIGNED BY: V. ELIMBAN | | | | CHECKED BY: V. ELIMBAN | | MACLEAN PUMPING STATION | | | | | |
| | | | | | DRAWN BY: D. PELLEGRINO | | | | APPROVED BY: V. ELIMBAN | | | | | | | |
| | | | | | SCALE: 1 : 1 | | | | ISSUED FOR CONSTRUCTION BY: M. SKINNER | | | | | | | |
| | | | | | DATE: 2023/08/30 | | | | DATE: 2025/04/30 | | PANEL LAYOUT DAMPER-ACTUATOR JUNCTION BOXES | | | | | |
| | | | | | CONSULTANT NO.: | | | | | | | | | | | |
| 00 | ISSUED FOR TENDER AND CONSTRUCTION | | | | 2025/04/30 | VE | VE | | | | | | | | | |
| NO. | REVISIONS | | | | DATE | DESIGN | CHECK | | | | | | | | | |
| | | | | | | | | | | CITY DRAWING NUMBER 1-0630M-A0072 | | | | SHEET 001 | REV. 00 | SIZE A1 |